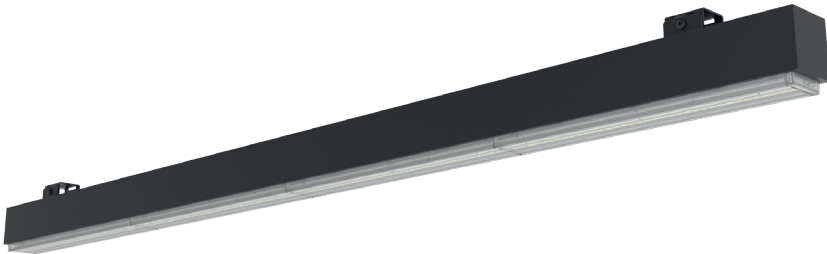


STRING SYSTEM COLUMBUS

Surface mounted string LED luminaire

- Mounting:** Directly on the ceiling
- Body material:** Aluminium profile
- Colour:** Standard Gray 9006, other RAL colours on request (please add RAL code after index number)
- LED module:** Philips / Osram / Tridonic or equivalent LED module included
- Colour temperature:** 4000K
- Colour Rendering Index (CRI)** >90 in standard
- Driver:** Electronic driver in standard, DALI on request
- Emergency unit:** N/A
- Movement sensor:** N/A
- Daylight control sensor:** N/A
- Operating temperature range:** 0°C ... +40°C
- IP Class:** IP20
- Power:** 220-240V 50/60Hz
- Lighting direction:** Direct
- Reflector type:** Integrated lens
- Light distribution:** Symmetric or asymmetric
- Diffuser:** N/A
- General data:** 5 Years standard warranty



Index no.	Lumen output [lm]	Power [W]	Colour temp. [K]	CRI	Lifetime [H]	MacAdam [SDCM]	Length [mm]	Weight [kg]
6820.7500/940	7500	61	4000	Ra > 90	50.000	3	1427	2,70
6820.10000/940	10000	80	4000	Ra > 90	50.000	3	1146	2,70
6820.12500/940	12500	100	4000	Ra > 90	50.000	3	1427	3,00
6820.10500/940	10500	85	4000	Ra > 90	50.000	3	2000	4,50
6820.17500/940	17500	142	4000	Ra > 90	50.000	3	2000	4,70

Different lumen output or wattage available on request

Wattage of products may vary due to constant LED efficacy improvements. Luminous flux & Luminaire Power tolerance +/- 10%.

System power consumption (LED module & driver) depends on components used

